



AN NGC STANDARD FLOWER SHOW
TAMPA FEDERATION OF GARDEN CLUB
CIRCLES, INC.

2629 Bayshore Boulevard, Tampa, Florida 33629
813-251-5059

SATURDAY & SUNDAY
MARCH 28 – 29, 2026
9AM-4PM

FREE & OPEN TO THE PUBLIC, WHEELCHAIR ACCESSIBLE

Member of National Garden Clubs, Inc., Deep South Garden Clubs, Inc.,
Florida Federation of Garden Clubs, Inc. & District VIII

Held in conjunction with GreenFest

TAMPA GARDEN CLUB PRESIDENT'S MESSAGE

Blooming Ideas and Rooted Connections!

It is my pleasure to welcome you to the Tampa Garden Club's annual NGC Standard Flower Show – a celebration of creativity and community spirit. As club Co-President, I am continually inspired by the dedication and passion of our members, whose talents have helped us flourish into a dynamic and welcoming organization.

This year's Flower Show has five exciting Divisions that fill our beautiful rooms: Design, Horticulture, Botanical Arts, Youth, and Education. Each Division offers a chance for members and guests to learn, compete, and celebrate the artistry that makes gardening so rewarding.

The theme for this year, "Oh, the Games People Play!" captures the playful spirit of garden club life – bringing members together in friendly competition. Whether you're here to admire Advanced Designs, explore Botanical Arts, discover the magic of garden Photography, or cheer on our talented YOUTH, you'll find inspiration around every corner.

Our club is now home to 440 enthusiastic members, united across ten unique Circles, each bringing their own vision to our shared love of gardening. Together, we have cultivated a space where creativity blooms and friendships take root, making each event an opportunity for connection and discovery. Our philosophy is to foster education while making friends and enjoying every moment, and we now proudly offer evening classes that are open to the public to welcome members of our community.

Welcome to the Flower Show – where creativity blossoms
and friendships flourish!

JoAnn Nuccio



Tampa Garden Club Co-President 2025-2027

FLOWER SHOW CHAIRMAN'S MESSAGE

Gardening is the slow game you play with Mother Nature

"Oh, the Games People Play!" While the show's title might suggest complex social interactions or strategy-filled contests, here we've reinterpreted "games" as the creative and skillful challenge of floral design and horticulture. After all, the best game is not a game at all, but a garden. Both teach patience, demand careful watchfulness, and yield triumphs born from a series of small, adaptable efforts.

This year's exhibits are designed to share knowledge with our club members and the viewing public regarding plant identification, the elements of floral design, current environmental issues and more. Appreciate the artistry, skill, and passion that have gone into every plant and exhibit. We hope these beautiful botanical offerings give you inspiration and a renewed love of nature.

Special thanks to our Membership Educators who provided eight (8) workshops beginning in August, monthly Circle Buddy communications and eight (8) Expert Presentations to our Circles. This education not only provided the knowledge necessary to create the entries and sparked enthusiasm that continued through the year. Our Division Chairmen coached our participants over the finish line with their recruitment and coaching.

We began work last May, with the majority of our diligent committee attending every monthly meeting and focus groups too numerous to count. My sincere gratitude to every committee member, participant and volunteer who made this show a reality. I am proud to have served as your chairman and hope you have enjoyed the "Oh, the Games People Play!" flower show season as much as I have.

See You at the Show!

Patty Bornick

Flower Show General Chairman 2026



TABLE OF CONTENTS

President's Message	1
Chairman's Message	2
Table of Contents	3
Committee Chairmen	4
General Rules	5
Purpose of an NGC Flower Show	7
NGC Standard System of Awarding.....	7
NGC Top Exhibitor Awards in This Flower Show	8
DIVISION I: DESIGN	
Design Rules	10
Scale of Points	11
Sections and Classes	12
DIVISION II: HORTICULTURE	
Horticulture Rules	15
Scale of Points	17
Sections and Classes	18
DIVISION III: BOTANICAL ARTS	
Botanical Arts Rules	26
Scale of Points	28
Sections and Classes	29
DIVISION IV: EDUCATION	
Education Rules	32
Scale of Points	32
Exhibits	33
DIVISION V: YOUTH	
Youth Rules	34
Scale of Points	34
Section and Classes.....	35



FLOWER SHOW COMMITTEE CHAIRMEN

Club Co-President: JoAnn Nuccio.....	nuccio.joann@gmail.com	813-727-5746
Club Co-President: Michele Vatalaro	michele.vatalaro@hotmail.com	813-992-2616
General Chair: Patty Bornick	bornickp@gmail.com	813-545-3737
Schedule Chair & BOE: Patty Bornick	bornickp@gmail.com	813-545-3737
Design Division I:		
Chairman – Tuky Vargas	tukyvargas@hotmail.com.....	813-454-7742
Co-Chair - Mindy Papetti	mindypapetti@icloud.com	908-305-6139
Co-Chair - Denisse Campos	denisse.camsa@hotmail.com	813-863-6980
Horticulture Division II:		
Chairman - Marte Watson	watson452@aol.com	813-244-8457
Co-Chair - Martha Cooper	mvmcoop@aol.com	850-687-0691
Horticulture Placement:		
Chairman - Vera Furtick	furtickvera@gmail.com	941-544-7368
Co-Chair – Tona Bell	tona@paperseahorse.com	813-205-7601
Botanical Arts Division III:		
Arts & Crafts and Horticulture		
Chairman - Preston Tran	prestontran6@gmail.com	813-810-3200
Co-Chair - Becky Jenkins	beckyjinx@yahoo.com	813-789-7851
Photography		
Co-Chair - Kathy Echevarria	kathy.echevarria@gmail.com	813-240-5272
Co-Chair - Rodrigo Salazar	pabrodsal@mac.com	718-490-1737
Education Division IV:		
Chair: Kitty Wallace	kittwal@aol.com	813-992-0940
Youth Division V:		
Chairman - Debby Eger	tennisdeb1230@gmail.com	813-629-0066
Co-Chair - Donna Colby	donna@colbymail.com	813-390-7066
Co-Chair: Kitty Wallace	kittwal@aol.com	813-992-0940
Advisor: Parke Finold	parterre1@aol.com	941-705-7409
All Entries Chair: Fatima Mayer	fatima.mayer@gmail.com	813-416-7333
Clerks & Awards Chair: Suzann Corral	maryswood@mac.com	813-785-5707
Focal Area, Welcome Table, Entrance		
Chairman: Tarah Bluma	tarahbluma@gmail.com	512-775-7987
Co-Chair: Jordan Prosser	prosser.jordan@outlook.com	813-477-6340
Co-Chair: Jeanne Preudhomme	reachmejp@gmail.com	813-512-0411
Hospitality Chair: Lizz Harmon	lizz@lizzharmon.com	813-477-4690
Hostess Chair: Carolyn Franzese	cfranzese21@gmail.com	813-434-5178
Judges Chair: Parke Finold	parterre1@aol.com	941-705-7409
Judges Lunch Chair: Diane Patterson	dpatte5353@gmail.com	561-722-7254
Table Décor: Mercedes Piesco	mercedespiesco@hotmail.com	412-849-3459
Membership Education:		
Co-Chair: Amy Hutmacher	amyhutmacher@rocketmail.com	931-302-5362
Co-Chair: Pam Slagg	pamslagg@gmail.com	831-767-2710
Publicity Chair: Caroline Grant	caroline@yellowhousemarketing.com ...	585-775-7291
Photographer: Rodrigo Salazar	pabrodsal@mac.com	718-490-1737
Secretary: Pat Leigh	piyapatk27@gmail.com	813-947-2278
Staging & Property Chair: Sandy Streit	sandyrae@verizon.net	813-503-6362
Treasurer: Suzann Corral	maryswood@mac.com	813-785-5707

GENERAL RULES

HB pgs. 24-25

1. **The Flower Show conforms to the standard established by the National Garden Clubs, Inc (NGC). The Handbook for Flower Shows (HB), 2017 edition, with revisions posted on the NGC website, is the authority for all issues not covered by the schedule, which is the Law of the Show.** The [July 2026 Digital Flower Show Handbook](#) can be downloaded for free from the NGC website: gardenclub.org. It can be found under the tab for "Schools"/"Flower Show Schools"/"Flower Show School Resources." It is also on the Tampa Garden Federation of Club Circles (TGC) website: tampagardenclub.com, under the tab for "Events"/"NGC Flower Show"/"Flower Show Handbook."
2. Competition in Divisions I – IV is open to all members of TGC, Florida Federation of Garden Clubs, Inc. (FFGC) and NGC. Division V is open to all youth residing in Florida that are the appropriate age for a specified age group and members of a youth garden club registered with FFGC.
3. Design, Horticulture, Botanical Arts and Education Division entries must be REGISTERED by March 11, 2026, either online or via paper registration forms. Both online and paper registration forms are available on the TGC website: tampagardenclub.com, under the tab for "Events"/"NGC Flower Show." Then click on "Online Entry Form" or "Paper Entry Form," instructions for both are noted on the forms. Consult the rules for Photography, Education and Youth Divisions for deadlines and more specific information. (HB pg. 24) All division chairmen review entries for conformity to the schedule.
4. Information regarding **online and paper entry forms are available from the Entries Chairman (Fatima Mayer, fatima.mayer@gmail.com) or the General Chairman (Patty Bornick, bornickp@gmail.com) on or before January 5, 2026.** Division Chairmen are also available to assist entrants; see the schedule division sections for contact information.
5. **All online and/or paper entries, with the required entry form information, must be sent to the Entries Chairman, Fatima Mayer, by March 11, 2026, in order to be computerized for the entry card.**
6. **ALL exhibits** will be accepted at the Tampa Garden Club located at 2629 Bayshore Blvd, Tampa, FL 33629 according to the following schedule: **WEDNESDAY & THURSDAY, MARCH 25TH & 26TH from 9am to 3pm, with the exception for CUT SPECIMENS which are allowed FRIDAY MORNING, MARCH 27TH, 7:30AM TO 9:30AM. ENTRIES AFTER 9:30AM WILL NOT BE ACCEPTED.**

7. All entries are to be removed from the show floor on **Sunday, March 29th, 4 to 5pm.**
8. Judging will begin at **10:30 am on Friday, March 27th.** All exhibits will be judged by National Garden Club accredited judges except for photography.
9. The Scales of Points are located in the Handbook for Flower Shows, Chapter 14, and are listed in the schedule division sections.
10. **The Classification Chair for each division checks exhibits for conformity to the schedule prior to judging. Final determination for conformance is the judge's responsibility.** (HB pg. 24)
11. **The General Chairman and Classification Chairman for each division are available during judging for possible consultations. They, along with the judges and clerks, are the only personnel allowed on the floor during judging.** (HB pg. 25)
12. **The decisions of the judges are final. Awards may be withheld if not merited.** (HB pg. 25)
13. **There must be an emphasis on FRESH plant material. NO artificial plant material is permitted in any exhibit in a division.** (HB pg. 25)
14. **Each exhibitor is limited to one entry per class. Except in the Horticulture Division where the exhibitor may make more than one entry per class if each is different species, variety, cultivar, type, or color.** (HB pg. 25)
15. **The Tampa Federation of Garden Club Circles, Inc. Flower Show Committee will strive to assure the safety of all items after arrival and placement but is not responsible for any loss or damage to exhibits.**
16. **Native Plants.** Native plant material correctly labeled and legally obtained within the state of Florida may be entered and displayed. University of Florida: <https://edis.ifas.ufl.edu/topics/native-plants>
17. **Noxious Plants.** The use of plant material classified as Invasive Exotic or Aquatic Invasive is prohibited. Florida Department of Agriculture and Consumer Services maintains **Florida Noxious Weed List** - weeds particular to Florida.: <https://www.fdacs.gov/Agriculture-Industry/Pests-and-Diseases/Plant-Pests-and-Diseases/Noxious-Weeds>
18. **Invasive Plants.** The use of plants classified as an invasive species in Florida is prohibited. The Florida Invasive Species Council compiles invasive species lists that are revised every two years. <https://www.floridainvasives.org/index-cfm/>
19. **Conservation List.** The use of plant material on Florida's Federally Listed Plant Species as endangered or threatened is prohibited. <https://www.fdacs.gov/Forest-Wildfire/Our-Forests/Forest-Health/Florida-Statewide-Endangered-and-Threatened-Plant-Conservation-Program/Florida-s-Federally-Listed-Plant-Species>

THE PURPOSE OF AN NGC FLOWER SHOW

- To educate club members and the viewing public
- To stimulate interest in horticulture and floral design
- To provide an outlet for creative expression
- To communicate NGC goals and objectives

PURPOSES OF NGC STANDARD SYSTEM OF AWARDING

HB pg. 5

- Encourages uniform standard of judging
- Ensures fair and objective evaluation of all exhibits
- Ensures that no criteria are overlooked
- Compares relative importance of qualities

THE NGC STANDARD SYSTEM OF AWARDING

HB pg. 5

- Scales of Points are based on Perfection (100 points)
 - Each exhibit is evaluated individually.
 - Exhibits are ranked by the points they receive.
- Award must be withheld if the exhibit does not meet the point value for the ribbon.
 - Only one first place (blue) ribbon per class or subclass; must score 90 points or more.
 - Only one second place (red) ribbon per class or subclass; must score 85 points or more.
 - Only one third place (yellow) ribbon per class or subclass; must score 80 points or more.
 - One (1) or more honorable mention (white) ribbons as merited; must score 75 points or more.

NGC TOP EXHIBITOR AWARDS IN THIS FLOWER SHOW

DIVISION I - DESIGN (HB pgs. 42 & 43)

One (1) Award of Design Excellence may be offered to the highest scoring blue ribbon exhibit scoring 95 or more in the entire Design Division entered by an individual. There must be at least two (2) Sections of Design with a minimum of three (3) classes per Section. Each class must have a minimum of four (4) entries. A rosette of Gold ribbons.

One (1) Designer's Choice Award may be offered to the highest scoring blue ribbon exhibit scoring 95 or more in Section A. The Section must have a minimum of three (3) classes with a minimum of four (4) entries in each class. A rosette of Purple ribbons.

One (1) Tricolor Award may be offered to the highest scoring blue ribbon exhibit scoring 95 or more in Section B. The section must have a minimum of three (3) classes with a minimum of four (4) entries in each class. A rosette of Red, Blue and Yellow ribbons.

One (1) Table Artistry Award may be offered to the highest scoring blue ribbon exhibit scoring 95 or more in Section C. The section must have a minimum of three (3) classes with a minimum of four (4) entries in each class. A rosette of Burgundy ribbons.

DIVISION II – HORTICULTURE (HB pgs. 40 & 41)

One (1) Award of Horticultural Excellence may be offered to the highest scoring blue ribbon exhibit scoring 95 or more in the entire Horticulture Division entered by an individual. There must be at least two (2) Sections of Horticulture. There is no minimum number of exhibits required per class. A rosette of Green, Blue, and Orange ribbons.

Two (2) Arboreal Awards may be offered - one in each Section H & I. The Arboreal Award is offered to the highest scoring blue ribbon exhibit scoring 95 or more in each Section entered by an individual. There must be at least three (3) classes listed in the Schedule for each eligible Section, but no minimum number of exhibits per class. A rosette of two shades of Green ribbons.

Three (3) Awards of Merit may be offered - one in each Section J, K & L. The Award of Merit is offered to the highest scoring blue ribbon exhibit scoring 95 or more in each Section entered by an individual. There must be at least three (3) classes listed in the



Schedule for each eligible Section, but no minimum number of exhibits per class. A rosette of two shades of Orange ribbons.

Seven (7) Grower's Choice Awards may be offered - one in each Section A,B,C,D,E,F & G. The Grower's Choice Award is offered to the highest scoring blue ribbon exhibit scoring 95 or more in each Section entered by an individual. There must be at least three (3) classes listed in the Schedule for each eligible Section, but no minimum number of exhibits per class. A rosette of Dark Green ribbons.

DIVISION III - BOTANICAL ARTS (HB pgs. 44-45)

One (1) Botanical Arts Horticulture Award may be offered to the highest scoring blue ribbon exhibit scoring 95 or more in the Botanical Arts Horticulture Section A entered by an individual. There must be at least three (3) classes in the Section with a minimum of four (4) exhibits in each class. A rosette of Light Brown ribbons.

One (1) Botanical Arts Artistic Crafts Award may be offered to the highest scoring blue ribbon exhibit scoring 95 or more in the Botanical Arts Artistic Crafts Section B entered by an individual. The exhibit must contain some plant material. There must be at least three (3) classes in the Section with a minimum of four (4) exhibits in each class. A rosette of Navy Blue ribbons.

One (1) Botanical Arts Photography Award may be offered to the highest scoring blue ribbon exhibit scoring 95 or more in the Botanical Arts Photography Section C entered by an individual. The photograph must relate to NGC goals and objectives. There must be at least three (3) classes in the Section with a minimum of four (4) exhibits in each class. A rosette of Black & White ribbons.

DIVISION IV – EDUCATION (HB pgs. 43-44)

One Educational Top Exhibitor Award, a Division Award, may be offered per show. A minimum of two (2) exhibits, theme related and exhibiting the NGC goals and objectives must be present. A rosette of Brown and White ribbons.

DIVISION V – YOUTH (HB pgs. 44 & 47)

Youth Top Exhibitor Award, a Section Award.

Two (2) Youth Top Exhibitor Awards may be offered, one (1) in Section A and one (1) in Section B. A minimum score of ninety (90) is required to place an NGC Youth Top Exhibitor award. No minimum number of exhibits required. A rosette of Red, White and Blue.





DIVISION I DESIGN RULES

HB pgs. 28-29, 79-81

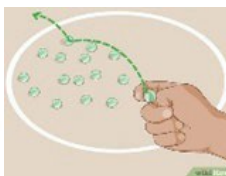
ACTION GAMES

1. The NGC Exhibit Policies (HB pgs. 79-80) are printed in the Handbook for Flower Shows, Chapter 7, Exhibiting in the Design Division, NGC Policies and Guidelines. (HB pgs. 28-29)
 - a. Some plant material must be used in every exhibit. This includes fresh and/or dried plant material (according to the section requirements).
 - b. Each class is limited to four (4) entries. Exhibitors may enter multiple classes within the Design Division, but only one (1) exhibit per class.
 - c. The exhibit entered into competition must be the work of only one (1) exhibitor and that exhibitor's name must appear on the entry card.
 - d. If the designer is unable to fulfill the assignment, it is the designer's responsibility to provide a substitute and advise the Design Entries Chair.
 - e. If the designer is unavailable to transport and/or set up the completed design, a substitute may enter the exhibit for the designer. The designer may receive exhibiting credit if needed. This is permitted only for completed designs.
 - f. A single flower or a container-grown plant is not a "design." Container-grown plants are fresh plant material and are permitted in the Design Division where appropriate, but they are never considered floral designs.
 - g. Landscapes, scenes or anything representing an actual item of clothing, person, animal, etc. are NOT considered acceptable in the Design Division. These items are exhibited in the Botanical Arts Division.
 - h. Religious symbols used in a design must be displayed in a respectful manner.
 - i. When Design techniques are required, they must be listed on a card.
2. Advance registration is required by March 11, 2026 (as instructed on the TGC website: tampagardenclub.com). All entries are reviewed by the Design Chairmen: Tuky Vargas - tukyvargas@hotmail.com, Mindy Papetti - mindypapetti@icloud.com, and Denise Campos - denisse.camsa@hotmail.com.
3. Plant material and non-plant material permitted and not permitted in the Design Division are printed in the Handbook for Flower Shows, Chapter 7. (HB pgs. 80-81).
4. All plant material used in the design must be identified with current scientific designation on a 3 in. x 5 in. index card provided by the exhibitor and included with the entry. (HB pgs. 29 and 80)

5. The exhibitor is required to conform to the stated descriptions and limitations of the Design Type if named in the class. (HB pg. 29)
6. Rules for Design Types, Advanced Design Types, Table Designs and Table Appointments are found in the Handbook for Flower Shows, Chapter 7. (HB pg. 29)
7. Designer is on his/her honor that the design being entered has not been previously entered or judged in an NGC Standard Flower Show. (HB pg. 137)
8. **Design must be approved for conformance by a Design Chairman before the exhibitor leaves the Show Area.**

DIVISION I - DESIGN SCALE OF POINTS HB pg.130

Conformance	
To Type	7
To Schedule Requirements	7
Design Principles	48
Selection of Components	8
Organization of Components	8
Expression	8
Distinction	14
TOTAL	100



DIVISION I - DESIGN SECTIONS & CLASSES

HB pg. 28

ACTION GAMES

"Every idea is a seed; plant it boldly and water it with action." Marion Bekoe.

ELIGIBLE FOR ONE (1) AWARD OF DESIGN EXCELLENCE HB pg. 42.

One (1) award may be offered to the highest scoring blue ribbon exhibit, scoring 95 or more in the entire Design Division.

Design Chairman, Entries & Classification: Tuky Vargas - tukyvargas@hotmail.com

Co-Chair & Entries: Mindy Papetti - mindypapetti@icloud.com

Co-Chair & Entries: Denise Campos - denisse.camsa@hotmail.com

Section A: AGILITY GAMES

What is a good quote about agility games and gardening?

DESIGNS ELIGIBLE FOR DESIGNER'S CHOICE AWARD. HB pg. 42.

Plant material may be dried, treated dried and/or fresh. Exhibitors have freedom to choose other components within NGC policies.

Class 1: Pick-Up Sticks

"If you love a flower, don't pick it up... Love is about appreciation" — Jason Henry

Armature Design (HB pg. 77) A Creative Design featuring an Armature, a grid-like structure created by the designer from natural or man-made materials. To be staged using a 32 in. high pedestal with a 24 in. square black top placed in front of an off-white wall. Frame of reference: 24 in. w x 24 in. d, no height restriction.

Class 2: Shooting Marbles

"Little kids shoot marbles where the branches break the sun" — Jim Carroll

Creative Line-Mass Design (HB pg. 74) A Creative Design where line is dominant, with plant material and/or other optional components are included to add strength and depth to the design. To be staged using a 32 in. high pedestal with a 24 in. square black top placed in front of an off-white wall. Frame of reference: 24 in. w x 24 in. d, no height restriction.



Class 3: Twister

Gardening will tie you up in a knot. You reach, and stretch. You balance and twist. Try it once, you'll get the compost.

Multi-Rhythmic Design (HB pg. 75) A Creative Design with emphasis on two (2) or more rhythms in the design with one (1) rhythm dominating. To be staged using a 32 in. high pedestal with a 24 in. square black top placed in front of an off-white wall. Frame of reference: 24 in. w x 24 in. d, no height restriction.

Section B: PARTY GAMES

"Spring is nature's way of saying, 'Let's party!'"--Robin Williams

DESIGNS ELIGIBLE FOR TRICOLOR AWARD, HB pg. 43

All plant material must be fresh. Non-plant material may be included.

Class 4: Musical Chairs

Life is like a game of musical chairs, you never know when the music will stop, and you'll have to find a new seat!

Parallel Design (HB pgs. 75) A Creative Design consisting of three (3) or more groupings of plant material and optional components with a strong parallel placement in a single container and/or base. To be staged using a 32 in. high pedestal with a 24 in. square black top placed in front of an off-white wall. Frame of reference: 24 in. w x 24 in. d, no height restriction.

Class 5: Pin-the-tail on the Donkey

Pin-the-tail on the Donkey is a reminder that we don't always know where we're going, but we can still have fun trying.

American Traditional Cascade Design (HB pg. 73) A design with emphasis on a downward rhythmic movement. To be staged using a 32 in. high pedestal with a 24 in. square black top placed in front of a white curtain. Frame of reference: 24 in. w x 24 in. d, no height restriction.

Class 6: Pipeline

"To assume that a bigger pipeline is a better pipeline is a dangerous assumption."--Jason Jordan

Tubular Design (HB pg. 77) A Creative Design having dominant cylindrical forms throughout. Plant material and other optional components complete the design. To be staged using a 32 in. high pedestal with a 24 in. square black top placed in front of a white curtain. Frame of reference: 24 in. w x 24 in. d, no height restriction.

Section C: TABLETOP GAMES

Some play tabletop games to escape reality. I garden for the same reason—it's just a game with real plants instead of cardboard ones.

DESIGNS ELIGIBLE FOR ONE (1) TABLE ARTISTRY AWARD, HB pg. 43

Class 7: Ping-Pong

"The secret to ping pong is to never take your eye off the ball." —Forrest Gump

An Exhibition Table (HB pg. 76) Not meant to be functional. Created artistically to suggest the service of lunch with no requirements as to the type or number of table appointments. Plant material must be used as needed for overall design. To be staged on one-half of a 6 ft. table, 30 in. deep, draped with black floor length cloth. Exhibitor to provide staging panel 30/32 in. wide x 48 in. high and matching underlay. Frame of reference: 30 in. w x 30 in. d x 48 in. h.

Class 8: Marble Solitaire

The game is designed for one, and the silence is the prize.

Tray for One (HB pg. 76) Tray planned and set for actual service of breakfast. The Decorative Unit should be in scale to the one (1) place setting. The tray requires an appropriately sized Decorative Unit with the stability of the Decorative Unit given importance. To be staged on one-half of a 4 ft. table, 24 in. deep, draped in black cloth. Table is freestanding (viewed from all sides). Tray not to exceed its 24 in. x 24 in. frame of reference.

Class 9: Pool

"Real knowledge is to know the extent of one's ignorance." —Confucius

Buffet Table (HB pg. 76) Service for four (4) with components conveniently and logically placed for ease of self-service. At least one (1) serving piece required. A table planned and set for actual service of a casual dinner. Convenience and a sense of order must prevail. A decorative unit must be included. A container-grown plant alone is not a design. To be staged on a 5 ft. table, 30 in. deep, draped in black. Exhibitor may provide overlay. Table is freestanding (viewed from all sides). Frame of reference: 60 in. w x 30 in. d.



DIVISION II - HORTICULTURE RULES

HB pgs. 55-57

VIDEO GAMES

1. The NGC Exhibit Policies (HB Pg. 55) are printed in the Handbook for Flower Shows, Revised 2017, Chapter 6, Exhibiting in the Horticulture Division. (HB Pg. 27)
 - a. All exhibits must be FRESH. Dried and preserved specimens may be entered in the Botanical Arts-Horticulture Division.
 - b. All exhibits must have been grown by the exhibitor.
 - c. Plant material must be in its natural state and may not be altered by application (treatment) of oil, commercial "shine" products, etc. that change the natural appearance. No wiring of specimens is permitted.
 - d. Only foliage and/or flowers naturally grown and still attached to the specimen are permitted. Unattached foliage is never included with a cut bloom specimen.
 - e. All plant material must have been in the possession of the exhibitor for the appropriate number of days listed in the LENGTH OF POSSESSION CHART.
2. The rules for a single species cut or container-grown specimen are listed in the HB Pgs. 58-59, or its supplement, Horticulture Exhibiting and Judging. (HB Pg. 27)
3. In order to receive an NGC Top Exhibitor Award, the exhibitor must identify their entry by its binomial name or currently acceptable scientific designation (Consult Handbook for Flower Shows, Chapter 6.) (HB Pg. 27)
4. Entry cards will be computer generated by the Flower Show Committee. (HB Pg. 57)
5. Cut specimens should not have foliage below the water line, except for *Gladiolus*. (HB Pg. 27)
6. If a plant is considered a flowering plant, it should be exhibited as a flowering specimen. Foliage plants may flower but should be exhibited as foliage plants if they are grown for their leaves. (HB Pg. 27)
7. Specimens with a class designation in the schedule may not be entered in the "Any Other Worthy" class. (HB Pg. 27)
8. The Horticulture Classification Committee Chairman and/or General Show

Chairman are free to subdivide classes by color, form, size, cultivar, variety, or other distinguishing characteristics. (HB Pg. 27)

9. Flower Show Committee will furnish clear, colorless, glass containers for cut specimens. Clear plastic wrap and/or marbles will be provided by the committee. (HB Pg. 56)
10. Double potting is permitted; however, the inner pot must not be visible. Moss is not permissible to cover soil in pot. (HB Pg. 58)
11. All entries must be of superior quality, clean and well groomed. Containers must be clean and appropriate to the plant.
12. Unless specified differently under individual Sections of the Schedule, **containers are not to exceed 14 in. diameter and weigh no more than 20 lbs.**
13. The Horticulture Committee must approve all entries before they are placed. They may disqualify any entry that does not conform to the Schedule or that is of inferior quality. The Placement Committee will then place the entry.

LENGTH OF POSSESSION CHART

HB pg. 55

Type of Plant Material	Length of Possession
Combination Plantings except troughs	6 weeks
Annuals	90 days: EXCEPTION -no minimum for early maturing
Bulbs	90 days: EXCEPTION- no minimum for forced/corms/tubers/ rhizomes such as Hippeastrum (amaryllis), paperwhite, Narcissus, hyacinths, etc.
Houseplants	90 days
Perennials (Herbaceous)	90 days
Vegetables and Fruits	90 days: EXCEPTION-no minimum for early maturing crops such as lettuce, radishes, watercress, etc.
Arboreal (Woody Ornamentals)	6 months

DIVISION II – HORTICULTURE

SCALES OF POINTS (HB pg. 129)

ALL CUT OR CONTAINER- GROWN HORTICULTURE SPECIMENS AND COLLECTIONS

(ARBOREAL, FLOWERING,
FOLIAGE,
FRUIT/VEGETABLE/NUTS)

Conformance	5
Plant Identification	5
Peak of Perfection	
Form	20
Color	20
Maturity/Size	20
Condition/Blemishes	15
Grooming/Staging	
Grooming	10
Staging	5
TOTAL	100

COMBINATION PLANTINGS AND GARDENS

Conformance	5
Plant Identification	5
Labeling	5
Peak of Perfection	
Form	10
Color	10
Condition/Blemishes	10
Show-worthy Size	5
Overall effect	30
Creative/Distinctive	5
Grooming	10
Staging	5
TOTAL	100

DIVISION II – HORTICULTURE SECTIONS & CLASSES

VIDEO GAMES

“Sometimes life is like a video game. When things get harder, and the obstacles get tougher, it just means you leveled up.” — Lilah Pace

Eligible for One (1) Award of Horticultural Excellence. HB pg. 40.

To be displayed on a 6 ft. table covered with a black tablecloth. Some exhibits may be placed on risers.

Horticulture Chairman, Entries and Classification: Marte Watson - watson452@aol.com

Co-Chair & Entries: Martha Cooper - mvcoop@aol.com

Section A: THE LEGEND OF ZELDA: BREATH OF THE WILD

The Legend of Zelda: Breath of the Wild: This game features diverse plant life, including flowers, that add to the beauty of the vast open world of Hyrule.

Eligible For One (1) Grower’s Choice Award, HB pg. 41

CONTAINER-GROWN PLANTS: FLOWERING

(single, multiple, self-multiple plantings)

Class 1: *Adenium* (Desert Rose)

Class 2: *Anthurium*

Class 3: *Begonia*

Class 4: *Gerbera jamesonii* (Gerbera Daisy)

Class 5: *Hippeastrum* (Amaryllis)

Class 6: *Impatiens*

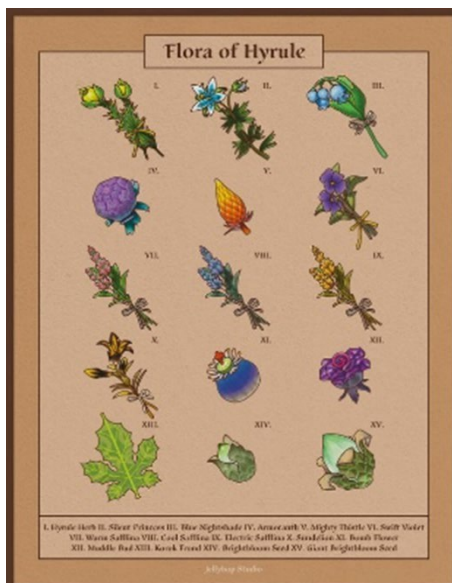
Class 7: *Pelargonium* (Geranium)

Class 8: *Penta*

Class 9: *Spathiphyllum* (Peace Lilly)

Class 10: *Streptocarpus ionanthus* (African violet)

Class 11: Any other worthy container-grown flowering specimen



Section B: PAC-MAN

The player controls Pac-Man, who must eat all the dots inside an enclosed maze while avoiding four colored ghosts.

Eligible For One (1) Grower's Choice Award, HB pg. 41.

CONTAINER-GROWN PLANTS: FOLIAGE

(single, multiple, self-multiple plantings)

Class 12: *Aglaonema* (Chinese Evergreen)

Class 13: *Aralia*

Class 14: *Begonia*

Class 15: *Chlorophytum comosum* (Spider Plant)

Class 16: *Coleus*

Class 17: *Dieffenbachia*

Class 18: *Dracaena* (including Sansevieria)

Class 19: *Epipremnum* (Pothos)

Class 20: Ferns

a. *Adiantum*

b. *Asplenium*

c. *Davallia*

d. Other

Class 21: *Ficus*

Class 22: *Goeppertia* (Calathea)

Class 23: *Hedera* (Ivy)

Class 24: *Maranta* (Prayer Plant)

Class 25: *Monstera* (Swiss Cheese Plant)

Class 26: *Oxalis* (Shamrock)

Class 27: *Peperomia*

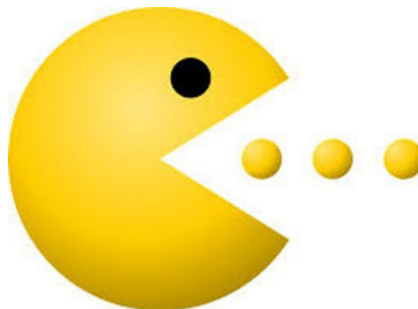
Class 28: *Philodendron*

Class 29: *Salvia* (Rosemary)

Class 30: *Tradescantia zebrina* (Inch Plant)

Class 31: *Zamioculacas* (ZZ plant)

Class 32: Any other worthy container-grown foliage specimen



Section C: THE ORCHID'S EDGE

The Orchid's Edge is a third-person combat action platformer where you play as Willow, a Dryad Spirit Reaper who must use her scythe to defend forest souls from a mechanical invasion.

Eligible for One (1) Grower's Choice Award, HB pg. 41

CONTAINER-GROWN OR MOUNTED ORCHIDS (single, multiple, self-multiple plantings)

Class 33: *Cattleya*

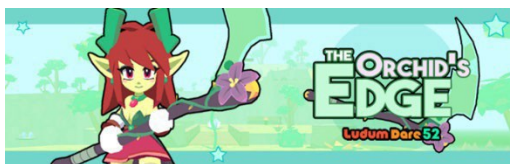
Class 34: *Dendrobium*

Class 35: *Phalaenopsis*

Class 36: *Vanda*

Class 37: Any other

worthy container-grown
or mounted flowering
orchid specimen



"They'll regret ever having come here."

Section D: MADDEN NFL

Madden NF' is a football video game that simulates the sport and allows players to compete using real-life NFL teams and athletes to score the most points and win games.

Eligible for One (1) Grower's Choice Award, HB pg. 41

BROMELIADS--SINGLE OR NATURALLY GROWN MULTIPLES (mounted, single, multiple, and self-multiple plantings)

Class 38: *Aechmea*

Class 39: *Billbergia*

Class 40: *Cryptanthus* (Earth Star Bromeliads)

Class 41: *Dyckia*

Class 42: *Guzmania*

Class 43: *Neoregelia*

Class 44: *Orthophytum*

Class 45: *Quesnelia*

Class 46: *Tillandsia* (Air Plant)

Class 47: *Vriesea*

Class 48: Any other worthy bromeliad specimen



Section E: MINECRAFT: CACTI CANYON

In Minecraft: Cacti Canyon, players must fight through an enemy-filled desert maze.

Eligible for One (1) Grower's Choice Award, HB pg. 41

CONTAINER-GROWN CACTI (single, multiple, self-multiple plantings)

Class 49: *Cereus*

Class 50: *Mammillaria*

Class 51: *Opuntia*

Class 52: *Rhipsalis*

Class 53: *Rhipsalidopsis* (Easter Cactus)

Class 54: Any other worthy cacti specimen



Section F: THE SIMS 4: ISLAND LIVING

In The Sims 4: Island Living, the Sims live on the beach and off-the-grid.

Eligible for One (1) Grower's Choice Award, HB pg. 41

CONTAINER-GROWN SUCCULENTS (single, multiple, self-multiple plantings)

Class 55: *Agave* (Century Plant)

Class 56: *Aloe*

Class 57: *Beaucarnea recurvata* (Ponytail Palm)

Class 58: *Crassula*

Class 59: *Echeveria*

Class 60: *Epiphyllum*

Class 61: *Euphorbia*

Class 62: *Graptopetalum*

Class 63: *Gasteria*

Class 64: *Haworthia*

Class 65: *Hoya*

a. *australis*

b. *carnosa/compacta*

c. *kerrii*

d. Other

Class 66: *Huernia*

Class 67: *Kalanchoe*

Class 68: *Portulaca* (Purslane)

Class 69: *Sedum*

Class 70: *Senecio*

Class 71: Any other worthy succulent specimen



Section G: POKEMON

Various Pokémon have plant features, like Bulbasaur, Bellsprout, Tropius, Vileplume or Comfey who resembles a lei of flowers.

Eligible for One (1) Grower's Choice Award, HB pg. 41

COMBINATION PLANTINGS, HB pg. 59.

A group of three (3) or more botanically different plants with similar cultural requirements such as light, water and humidity. Natural accessories permitted in all Combination Plantings but must be in scale with plantings and container.

Exhibitor is to provide a 4 in. x 6 in. index card identifying plants by current scientific names and location legend.

Limited to 4 entries per class.

Class 72: Planter with a colorful combination of some blooming plants and/or colorful foliage

Class 73: Dish garden with a combination of succulents

Class 74: Hanging Basket



Section H: PLANTS VS ZOMBIES: BATTLE FOR NEIGHBORVILLE
Players choose between battling as goofy plants or brain-hungry zombies.

Eligible for One (1) Arboreal Award, HB pgs. 40-41

ARBOREAL: FLOWERING, FRUITED OR CONED

One (1) flowering branch with several nodes and an apical tip; not to exceed 30 inches. Plastic wrap for wedging and transparent containers provided by committee. For heavy branches requiring additional support the exhibitor must furnish the appropriate transparent sized container, wedging and weights.

Class 75: *Brunfelsia* (Yesterday-Today-&-Tomorrow)

Class 76: *Citrus*

Class 77: *Cuphea* (Cigar Plant)

Class 78: *Eriobotrya* (Loquat Plant)

Class 79: *Hamelia* (Firebush)

Class 80: *Hydrangea*

Class 81: *Jatropha*

Class 82: *Ondontonema strictum* (Firespike)

Class 83: *Raphiolepis* (Indian Hawthorne)

Class 84: *Rhododendron* (Azalea)

Class 85: *Rondeletia strigosa* (Panama Rose)

Class 86: *Viburnum*

Class 87: Any other worthy flowering, fruited, or coned arboreal specimen



Section I: FINAL FANTASY IX

In Final Fantasy IX, Iifa Tree, Ancient Tree of Life, is on the world of Gaia.

Eligible for One (1) Arboreal Award, HB pgs. 40-41

ARBOREAL: FOLIAGE

One (1) foliage branch with several nodes and an apical tip; not to exceed 30 inches. No foliage allowed below the waterline. Plastic wrap for wedging and transparent containers provided by committee. For heavy branches requiring additional support, the exhibitor to furnish the appropriate transparent container, wedging and weights.

Class 88: *Aralia*

Class 89: *Breynia* (Snow Bush)

Class 90: *Coccoloba* (Sea Grape)

Class 91: *Codiaeum variegatum* (Croton)

Class 92: *Ficus*

Class 93: *Ilex* (Holly)

Class 94: *Podocarpus* (Japanese Yew)

Class 95: *Psychotria* (Wild Coffee)

Class 96: *Schefflera* (Umbrella Plant)

Class 97: Any other worthy arboreal foliage specimen



Section J: TETRIS: FLOWER GARDEN

Tetris: Flower Garden is a version of the game where you arrange falling flower shapes into bouquets, similar to how one might tend a garden.

Eligible for One (1) Award of Merit, HB pg. 41

CUT FLOWERING STEM

One (1) stem not to exceed 30 inches; up to 3 stems if flower is small.

Class 98: *Amaryllis*

Class 99: *Antirrhinum majus* (Snap Dragon)

Class 100: *Geranium*

Class 101: *Gerbera jamesonii* (Gerbera Daisy)

Class 102: *Justica* (Shrimp Plant)

Class 103: *Nasturtiums*

Class 104: *Rosa* (Rose)

Class 105: *Strelitzia* (Bird of Paradise)

Class 106: Any other worthy cut flowering stem specimen



Section K: DONKEY KONG COUNTRY RETURNS

The game's evil Tiki-like creatures, the Tiki Tak Tribe, are unleashed on Donkey Kong Island and hypnotize the animals into stealing Donkey Kong's banana hoard, prompting a trapse around the tropical island to reclaim it.

Eligible for One (1) Award of Merit, HB pg. 41

CUT TROPICAL FOLIAGE

One leaf with stem attached (if a part of normal growth pattern).

Class 107: *Coleus*

Class 108: *Colocasia* (Elephant Ear)

Class 109: Cycad

a. *Cycas* (Sago Palm)

b. *Zamia* (Cardboard Palm or Coontie)

c. Other

Class 110: *Dracaena*

Class 111: Ferns

Class 112: *Monstera*

Class 113: *Philodendron*

Class 114: *Strelitzia* (Bird of Paradise)

Class 115: *Zingiber* (Ginger)

Class 116: Any other worthy cut tropical foliage (leaf) specimen



Section L: SUPER MARIO BROTHERS

Luigi - Perhaps the most famous green man in gaming.

Eligible for One (1) Award of Merit, HB pg. 41

CUT FLOWERING VINE

One Flowering Stem not to exceed 30 inches.

Class 117: *Allamanda*

Class 118: *Bougainvillea*

Class 119: *Clerodendrum*

Class 120: *Lonicera* (Coral Honeysuckle)

Class 121: *Passiflora* (Passion Flower)

Class 122: *Petrea*

Class 123: *Trachelospermum* (Jasmine)

Class 124: Any other worthy cut flowering vine specimen



DIVISION III - BOTANICAL ARTS RULES

HB pgs. 91-96

GAMES OF CHANCE

1. **Botanical Arts Horticulture and Artistic Crafts exhibits must contain some plant material. No artificial plant material is permitted in any exhibit.**
2. **The rules for Botanical Arts Horticulture are printed in the HB, Chapter 10. (pgs. 91-93)**
3. **The rules for Botanical Arts Artistic Crafts are printed in the HB, Chapter 10. (pgs. 94-95)**
4. **The rules for Botanical Arts Photography are printed in the HB, Chapter 10. (pgs. 95-96)**
5. All Botanical Arts Horticulture, Artistic Crafts and Photography classes limited to four (4) entries. Each exhibitor may enter only one (1) exhibit in each class but may enter as many classes as desired.

Botanical Arts Horticulture Rules, HB pgs. 91-93

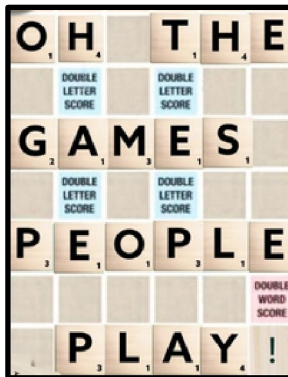
1. Container-grown Miniature gardens must be grown by the exhibitor for a minimum of 6 weeks.
2. Container is not to exceed 14 in. diameter and weigh no more than 20 lbs.
3. All plant material must be identified with current scientific designation on a 4 in. x 6 in. white card provided by the exhibitor and included with the entry.

Botanical Arts Artistic Crafts Rules, HB pgs. 94-95

1. Exhibit must contain some fresh and/or dried plant material. Only dried material may be treated.
2. No artificial, endangered or locally invasive plant material may be used.
3. All plant material must be identified with current scientific designation on a 3 in. x 5 in. index card provided by the exhibitor and included with the entry.

Botanical Arts Photography Rules, HB pgs. 95-96

1. All exhibits must relate to horticulture, gardening, design, or other NGC goals, objectives and/or initiatives (landscape, conservation, civic projects, preservation, ecology, environment, etc.).
2. Image must be matted; no frames allowed.
3. Professional printing and matting is permitted.
4. Exhibitors are encouraged to label photographed plant material, preferably with current scientific designation, on a 3 in. x 5 in. index card provided with the entry.
5. Photo may be enhanced by the exhibitor with cropping, filters, adjustments, and/or darkroom techniques. No extreme image manipulation.
6. Advance registration is required by February 12, 2026 (as instructed on the TGC website: tampagardenclub.com).
7. Exhibits (printed image) must be received by the Photography Chairmen by March 1, 2026. Kathy Echevarria - kathy.echevarria@gmail.com and Rodrigo Salazar - pabrodsal@mac.com.



DIVISION III - BOTANICAL ARTS

SCALES OF POINTS

HB pg. 129

Combination

Plantings and Gardens

Conformance	5
Plant Identification	5
Labeling	5
Peak of Perfection	
Form	10
Color	10
Condition/Blemishes	10
Show-worthy Size	5
Overall effect	30
Creative/Distinctive	5
Grooming	10
Staging	5
TOTAL SCORE	100

Botanical Arts Photography

Conformance	5
Interpretation of Class Title	10
Composition	25
Artistry/Creativity	25
Technical Achievement	25
Distinction	10
TOTAL SCORE	100

Botanical Arts

Artistic Crafts

Conformance	14
Design	48
Craftsmanship & Technique (12 points for each)	24
Distinction	14
TOTAL SCORE	100

DIVISION III - BOTANICAL ARTS SECTIONS & CLASSES

GAMES OF CHANCE

Fortune favors the bold, but only the wise know when to fold.

Botanical Arts Chairman, Entries & Classification: Preston Tran-prestontran6@gmail.com

Co-Chair & Entries: Becky Jenkins - beckyjinx@yahoo.com

BOTANICAL ARTS HORTICULTURE

Section A: CARD GAMES

Life is like a game of cards, but the greatest victory is not in the hand you are dealt, but in the garden you choose to cultivate with it.

ELIGIBLE FOR ONE (1) BOTANICAL ARTS HORTICULTURE AWARD, HB pg. 41

Class 1. Bridge

Miniature Landscape. All types of accessories permitted. Emphasis is not necessarily on plant material, but some live plant material must be included. A bridge may be represented in a variety of ways. Exhibitor to supply container. To be staged on ¼ of an 8 ft. table draped in black, in front of an off-white wall. Some exhibits may be placed on risers.

Class 2. Go Fish

Miniature Landscape. All types of accessories permitted. Emphasis is not necessarily on plant material, but some live plant material must be included. A body of water may be represented in a variety of ways. Exhibitor to supply container. To be staged on ¼ of an 8 ft. table draped in black, in front of an off-white wall. Some exhibits may be placed on risers.

Class 3. Hearts

Fairy Garden. All types of accessories permitted. Emphasis is not necessarily on plant material, but some live plant material must be included. Exhibitor to supply container. To be staged on ¼ of an 8 ft. table draped in black, in front of an off-white wall. Some exhibits may be placed on risers.



BOTANICAL ARTS ARTISTIC CRAFTS

Section B: DICE GAMES

"People are like dice. We throw ourselves in the direction of our own choosing."

-- Jean-Paul Sartre

ELIGIBLE FOR (1) ONE BOTANICAL ARTS ARTISTIC CRAFTS AWARD HB pg. 44

Artistic crafts must remain functional. They must be able to be used as intended.

Class 4. Bird Cage or Chuck-a-Luck

Decorate a bird cage, measuring 6.63 in. w x 6.63 in. d x 8.5 in. h, provided by committee.

To be staged on $\frac{1}{4}$ of an 8 ft. table draped in black, in front of an off-white wall. Some exhibits may be placed on risers.

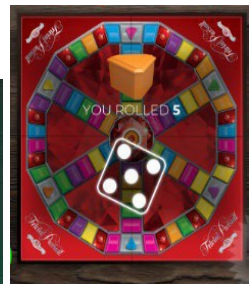
Class 5. Poker Dice

Decorate a casino dealer's visor, measuring 22-24 in. circumference x 6 in. brim x 4 in. h, supplied by committee. To be displayed on model headstands, provided by committee.

To be staged on $\frac{1}{4}$ of an 8 ft. table draped in black, in front of an off-white wall. Some exhibits may be placed on risers.

Class 6. Trivial Pursuit

Decorate paperweights to resemble a pair of dice. Two cubes, measuring 3 in. x 3 in. x 3 in., provided by committee. To be staged on $\frac{1}{4}$ of an 8 ft. table draped in black, in front of an off-white wall. Some exhibits may be placed on risers.



BOTANICAL ARTS PHOTOGRAPHY

Section C: TILE GAMES

The butterfly effect: Every tile you play and every decision you make has unforeseen consequences that ripple through a system.

ELIGIBLE FOR ONE (1) BOTANICAL ARTS PHOTOGRAPHY AWARD HB pg. 47.

The Exhibitor must print the following information on the back of the mat:

- Exhibitor Name, Phone Number, Class Number.
- The Exhibitor must tape an unsealed envelope to the back of the photo or mat. This will assure the correct entry card is placed with the photo.

Botanical Arts Co-Chairmen, Entries and Classification:

Kathy Echevarria - kathy.echevarria@gmail.com

Rodrigo Salazar - pabrodsal@mac.com

Class 7. Mahjong

An Asian inspired garden, color photo, 8 in. x 10 in., **landscape** orientation, with an 11 in. x 14 in. mat of any color. To be staged on a gray panel.

Class 8. Dominoes

Tiles in the garden, color photo, 8 in. x 10 in., **portrait** orientation with an 11 in. x 14 in. mat of any color. To be staged on a gray panel.

Class 9. Scrabble

A sign in a garden, black and white photo, 8 in. x 10 in., **landscape** orientation with an 11 in. x 14 in. mat of any color. To be staged on a gray panel.



DIVISION IV - EDUCATION RULES

HB pg. 29

PUZZLES

1. Education Exhibits may be the work of more than one (1) individual or organization, unless a Student Judge, or an Accredited Judge is seeking exhibiting credit for preparing an educational exhibit.
2. To be eligible for NGC Educational Top Exhibit Award, a minimum of eighteen (18) square feet of surface area must be used.
3. The use of some plant material is mandatory, which may be identified with current scientific designation on a 3 in. x 5 in. index card provided by the exhibitor and included with the entry.
4. Advance registration is required by March 11, 2026 (as instructed on the TGC website: tampagardenclub.com), with the Education Division Chair, Kitty Wallace - kittwal@aol.com and the Entries Chairman (Fatima Mayer, fatima.mayer@gmail.com.)

DIVISION IV – EDUCATIONAL EXHIBITS

SCALE OF POINTS HB pg. 129

EDUCATIONAL VALUE	
Interest to the Viewer	25
Clear, concise presentation	15
Adequate Signage	10
Conforms to NGC Objectives	10
STAGING	
Craftsmanship/Technique	10
Distinction	10
CREATIVITY AND EXPRESSION	20



DIVISION IV – EDUCATION EXHIBITS

PUZZLES

"The nice thing about doing a crossword puzzle is, you know there is a solution" – Stephen Sondheim.

Chairman and Entries: Kitty Wallace - kittwal@aol.com

ELIGIBLE FOR ONE (1) EDUCATIONAL TOP EXHIBITOR AWARD, HB pgs. 43-44

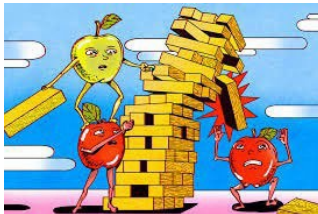
EXHIBIT 1. RUBIK'S CUBE

A solitary person's plant-based diet can improve the environment by significantly reducing their individual carbon footprint, decreasing water usage, minimizing land use, and decreasing pollution. To be staged on a 3 ½ ft. (42 in.) section of a table, 30 in. deep x 29 in. high, draped in black, in front of an off-white wall. Exhibitor to provide a niche (trifold) 36 in. wide x 48 in. high.



EXHIBIT 2. JENGA

Just as the removal of a critical Jenga block can topple the tower, keystone species like Florida's seagrass, gopher tortoises, and American alligators are essential for maintaining the stability of their ecosystems. To be staged on a 3 ½ ft. (42 in.) section of a table, 30 in. deep x 29 in. high, draped in black, in front of an off-white wall. Exhibitor to provide a niche (trifold) 36 in. wide x 48 in. high.



DIVISION V – YOUTH RULES

HB pg. 88

BOARD GAMES

1. The NGC Exhibit Policies are printed in the Handbook for Flower Shows, Chapter 9, exhibiting in the Youth and Sponsored Groups Division, NGC Policies and Guidelines.
2. All Horticulture exhibits must be grown by the exhibitor, though plants could be part of a family garden or yard.
3. Container-grown plants must have been in the possession of the youth exhibitor for a minimum of sixty (60) days.
4. Combination plantings must have been grown together for at least three (3) weeks.
5. **Youth exhibits are evaluated using Horticulture and Botanical Arts Scales of Points.**
6. Entrants are encouraged to identify plant material on a 3 in. x 5 in. index card provided by the exhibitor and included with the entry.
7. Those interested in entering the Youth Division should contact Youth Division Co-Chairmen, Debby Eger, tennisdeb1230@gmail.com, 813-629-0066 or Donna Colby, donna@colbymail.com, 813-390-7066 by March 11, 2026.

SCALES OF POINTS, HB pg. 129, 131

All Cut or Container-Grown Horticulture Specimens and Collections (Arboreal, Flowering, Foliage, Fruit/Vegetable/Nuts)

Conformance	5
Plant Identification	5
Peak of Perfection	
Form	20
Color	20
Maturity/Size	20
Condition/Blemishes	15
Grooming/Staging	
Grooming	10
Staging	5
TOTAL	100

Botanical Arts - Artistic Crafts

Conformance	14
Design	48
Craftsmanship & Technique (12 points for each)	24
Distinction	14
TOTAL SCORE	100

DIVISION V - YOUTH SECTIONS & CLASSES

BOARD GAMES

"We don't stop playing because we grow old; we grow old because we stop playing"
— George Bernard Shaw

Youth Chairman, Entries & Classification: Debby Eger - tennisdeb1230@gmail.com
Co-Chair & Entries: Donna Colby - donna@colbymail.com
Co-Chair & Entries: Kitty Wallace - kittwal@aol.com

YOUTH HORTICULTURE

ELIGIBLE FOR ONE (1) NGC YOUTH TOP EXHIBITOR AWARD

Section A: GAMES OF ACHIEVEMENT

*"When playing a game, the goal is to win,
but it is the goal that is important, not the winning."-- Reiner Knizia*

Juniors (Pre-school through age 7 or elementary school grades)

Class 1. Monopoly

Container-grown succulents and/or cacti. Entries not to exceed 10 in. in diameter. Plants must be cared for by the entrant, in a community or youth garden club, though succulents and/or cacti could be part of a family garden or yard. To be staged on a 6 ft. table draped in black, in front of an off-white wall. Some exhibits may be placed on risers.

Class 2. Clue

Harvested vegetables will be placed on an 8 in. clear plastic plate. Participant may display – 3 radishes or 2 potatoes or 2 carrots or 1 cabbage, for example. Vegetables must be cared for by the entrant, in a community or youth garden club, though plants could be part of a family garden or yard. To be staged on a 6 ft. table draped in black, in front of an off-white wall. Some exhibits may be placed on risers.



Class 3. Chess

Blooming cut specimens. Flowers cared for by the entrant, grown in a community or youth garden club, though plants could be part of a family garden or yard will be displayed in a clear vase, not to exceed 12 inches in height. Vase to be supplied by committee. To be staged on a 6 ft. table draped in black, in front of an off-white wall. Some exhibits may be placed on risers.

YOUTH ARTISTIC CRAFTS

ELIGIBLE FOR ONE (1) NGC YOUTH TOP EXHIBITOR AWARD

Section B: RACE GAMES

Racing... it's life. Anything that happens before or after is just waiting.

Juniors (Pre-school through age 7 or elementary school grades)

Class 4. Chutes and Ladders

Create a picture using plants, leaves, flower petals, twigs, and other elements to represent the game board's chutes and ladders. The committee will provide an 8 1/2 in. x 11 in. white cardboard and easel for display. To be staged on a 6 ft. table draped in black, in front of an off-white wall. Some exhibits may be placed on risers.

Class 5. Sorry

Create a photo holder from a giant Sorry! game piece, by decorating it with plant materials and other creative elements. Giant Sorry! game piece to be provided by the committee. To be staged on a 6 ft. table draped in black, in front of an off-white wall. Some exhibits may be placed on risers.

Class 6. Candy Land

Decorate a Candy Land baseball cap using some plant material and other elements. May use wrapped candy. White cap to be supplied by committee. To be staged on a 6 ft. table draped in black, in front of an off-white wall. Some exhibits may be placed on risers.

